

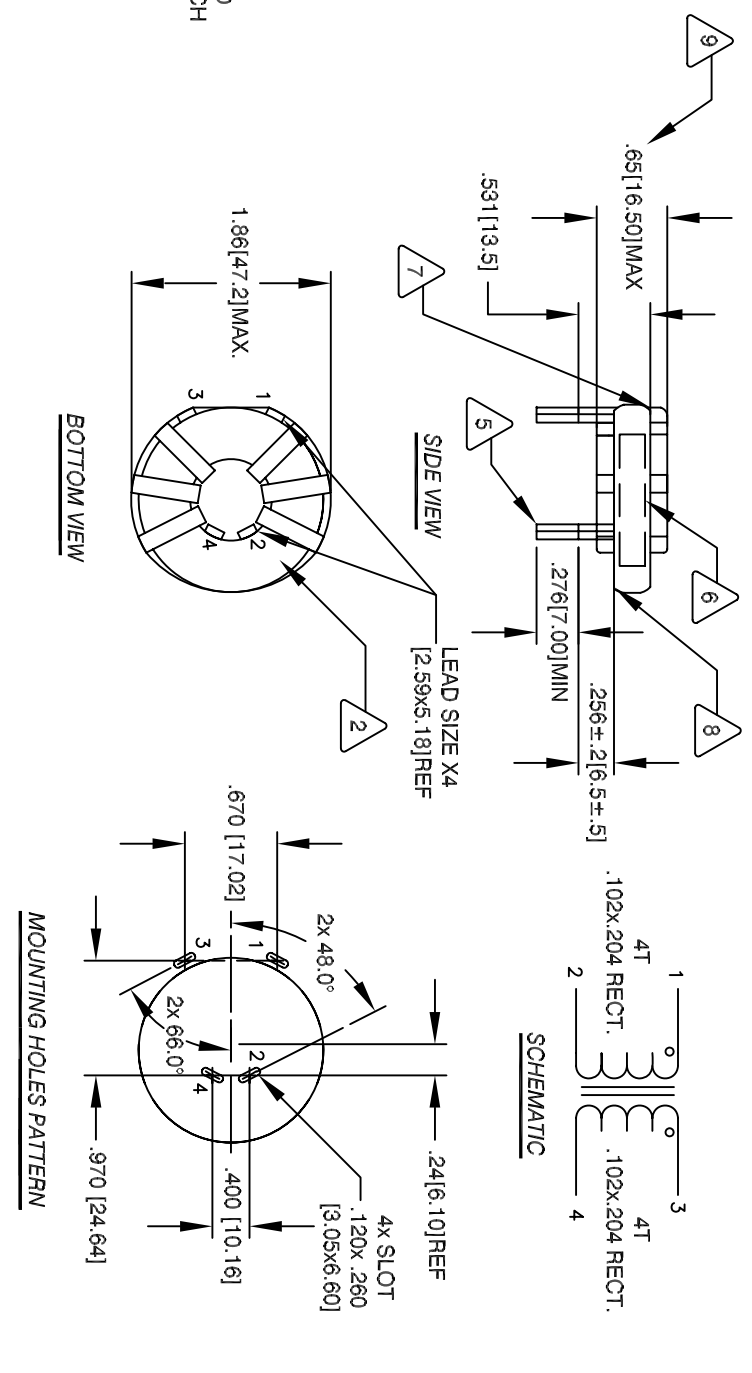
The information contained in this drawing is the sole property of CWS Coil Winding Specialist. Any reproduction in part or whole without written permission of CWS Coil Winding Specialist is prohibited.

REVISION HISTORY

REV	ECN	DESCRIPTION	BY	DATE	CHK	DATE
A		PRODUCTION RELEASE	TDK	7/16/06	JLJU	7/16/06
B		REVISED DIMENSIONS	RL	7/17/06	JLJU	7/17/06
C		ADDED NOTE #8, 9, 10, AND 11	KLC	10/7/08	CT	10/7/08

- 11 BUILD TO ROHS COMPLIANCE AND LEAD FREE
- OR OVEN CURED AS REQUIRED
- 10 DIP-VANISH WITH AC43 OR BC-346A OR EQUAL
- 9 THIS IS CRITICAL MAXIMUM DIMENSION
- 8 BOTTOM OF CORE TO START OF TINNING  
6.5±0.5 MM DIMENSION MEASURED FROM
- 7 TOP OF CORE TO START OF TINNING  
13.5 MM DIMENSION MEASURED FROM
- 6 USING A PERMANENT MARKING METHOD  
MARK PART NUMBER AND REVISION  
WRAP INDUCTOR WITH TAPE. (PER NOTE 2)
- 5 TO THE CORE  
MUST REST FLAT ON PCB. LEADS MUST BE TANGENT  
FLUSH WITH THE COIL EDGE. AS SHOWN (I.E. COIL  
REMOVE INSULATION AND TIN LEADS 7.0 MM MIN
- 4 SIDE OF CORE AND EVENLY SPACED, POLARITY NOTED  
WIND 4 TURNS, .102x .204 RECT. SINGLE LAYER ON EACH  
CONSTRUCTION:
- 3 TO INSURE INTEGRITY OF WINDING SEPARATION  
HI-POT TEST FOR INTERWINDING ISOLATION = 250VDC  
POWER LOSS = 5.2 W MAX @ 100A/COIL  
DCR = .40 MOHMS MAX./COIL  
L = 52 uH MIN / COIL, 70 uH NOM / COIL, 1 KHZ, 1Vrms  
SPECIFICATIONS @ 25°C:
- 2 APPROVED PART  
OUTER WRAP: 3M #11 OR #69 OR OTHER CWS  
WIRE: UL RECOGNIZED 200°C RATING MAGNET WIRE  
CWS BYTEMARK OR OTHER APPROVED PART  
CORE: RATED 6000 VOLT FERRITE TOROID INSULATION, HIGH PERM MNZN
- 1 CLASS B (130°C) REQUIRED  
MATERIAL: UL RECOGNIZED 94V-0 FOR FLAMMABILITY

NOTES: UNLESS OTHERWISE SPECIFIED, READ FROM BOTTOM UP



QTY	CODE	IDENT	MFG. P/N	DESCRIPTION	ITEM NO.
				<b>PARTS LIST</b>	
	AUTOCAD	SIGN	DATE		
	SOLIDWORKS	TDK	7/16/06		
	DRAWN	JLJU	7/16/06		
	CHECKED	KSUM	7/16/06		
	ENGR.	JLJU	7/16/06		
	APPR.				

UNLESS OTHERWISE SPECIFIED	TITLE:
DIMENSIONING AND TOLERANCE PER ANSI Y14.5M AND [MILLIMETERS].	COILWS COM, INC
TOLERANCE INCHES: .XX±.020	CWS Coil Winding Specialist
TOLERANCE METERS: .XX±.020	353 W Grove Ave
ANGLE PROJECTION: $\phi$	Orange, CA 92865
DO NOT SCALE DRAWING	

SCALE	SIZE	DATE	REV
1=1	B	7/16/06	C